

# Synthesis WCRP Coupled Model Intercomparison Project Phase 5 (CMIP5) Survey

Veronika Eyring (DLR, Germany) and Ron Stouffer (GFDL)  
*Incoming and Current CMIP Panel Chairs*



**WORKSHOP: NEXT GENERATION CLIMATE CHANGE EXPERIMENTS  
NEEDED TO ADVANCE KNOWLEDGE AND FOR ASSESSMENT OF CMIP6**

August 4-9, 2013  
Aspen, CO, USA

A curved view of the Earth from space, showing the blue atmosphere, white clouds, and green and brown landmasses. The text 'Knowledge for Tomorrow' is overlaid on the right side of the image.

Knowledge for Tomorrow



# Overview

## I. Background and Goal CMIP5 Survey

## II. Synthesis of Responses we have received so far

1. CMIP5 experiment design
2. Emissions / forcing for historical and RCP experiments
3. Standard output and specially prepared output
4. Model and experiment documentation
5. Data search and support
6. Timeline
7. Key science gaps that should be addressed by CMIP6
8. What else is missing?
9. Additional Comments

## III. Way forward in the planning of CMIP6

# I. Background and Goal CMIP5 Survey

# WCRP Coupled Model Intercomparison Project Phase 5 (CMIP5) Survey

Prepared by the [CMIP Panel](#) and Co-Chairs of the [Working Group of Coupled Modelling \(WGCM\)](#)

*Veronika Eyring, Ron Stouffer, Sandrine Bony, Natalie Mahowald, Jerry Meehl, Bjorn Stevens, Karl Taylor*

## Background:

- As most of the simulations for CMIP5 have been completed, and their analysis is in full swing it seems timely to ask, while experiences are still fresh, as to what went well, what didn't, and what gaps in the science are emerging.
- In particular, are gaps emerging that could be filled or bridged by a coordinated set of model experiments, and thus should be considered as a component of CMIP6.
- With an eye on CMIP6, a workshop “Next generation climate change experiments needed to advance knowledge and for assessment of CMIP6” will be held early August 2013 in Aspen, USA.
- This workshop will be the first, of what we hope will be a series of workshops and meetings, to assess the accomplishments and outstanding issues with the CMIP5 process and will help inform the design of CMIP6.

# WCRP Coupled Model Intercomparison Project Phase 5 (CMIP5) Survey

**Goal of this Survey:** To learn from those most active in CMIP5 what went well and what didn't and to provide input for the Aspen meeting and future CMIP6 planning workshops.

**Addressees:** This survey was sent to representatives of the climate community on *28 June 13*

1. Point of Contacts **CMIP5 model groups**

## USERS:

2. Co-Chairs **WCRP working groups** (<http://www.wcrp-climate.org/index.php/about-implementation/28-mplementation-working-groups>)
3. Co-Chairs **WGCM-Endorsed Community Coordinated Project** ([http://www.wcrp-climate.org/wgcm/cmip\\_coord.shtml](http://www.wcrp-climate.org/wgcm/cmip_coord.shtml))
4. Co-Chairs **Model Intercomparison Project** (<http://www.wcrp-climate.org/wgcm/projects.shtml>)
5. Point of Contacts **Integrated Assessment Model groups**
6. Co-Chairs **Related IGBP group or activity**
7. Contacts **ESG Federation**
8. Members of **Climate Services Partnership Coordinating Group** (<http://www.climate-services.org/coordinating-group>)
9. Some selected **Additional People**

**Outcome:** Synthesis and dissemination of the survey and consideration of the responses in the planning of CMIP6.

## Timeline

### Living Document:

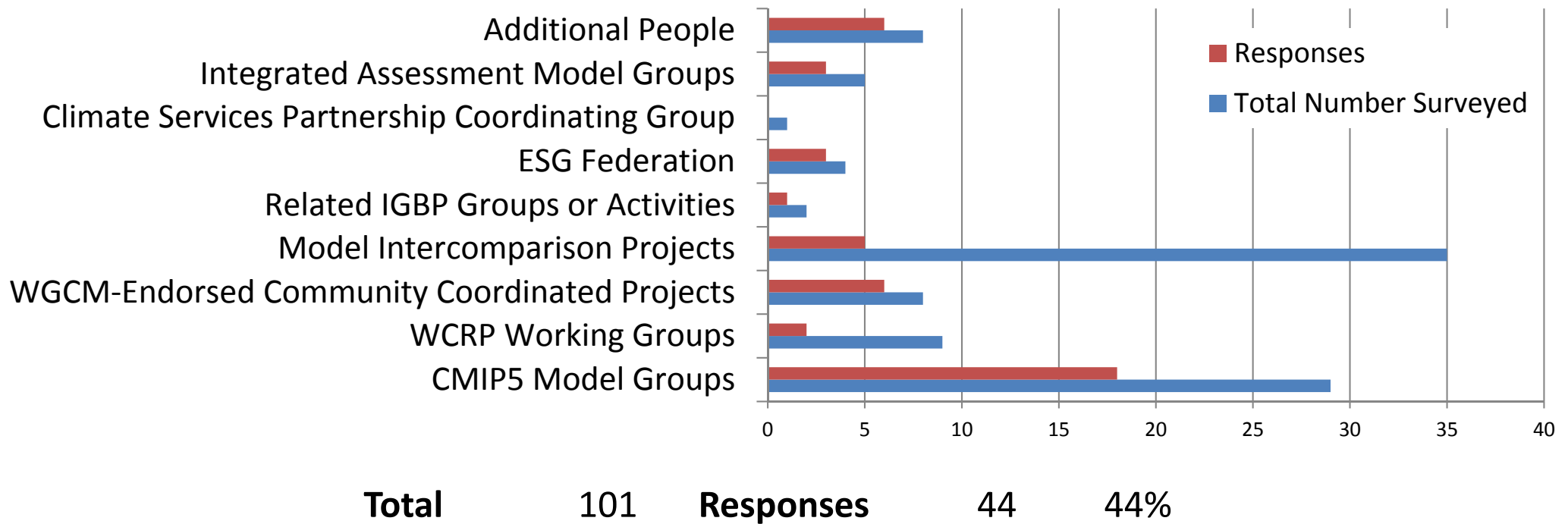
- We will next update this document for the WGCM meeting (1-3 October 2013)
- Further updates planned also beyond
- So
  - If you want to contribute to this survey and haven't yet done so, or if you want to update some of your responses, please email *Veronika Eyring* ([Veronika.Eyring@dlr.de](mailto:Veronika.Eyring@dlr.de)) and *Ron Stouffer* ([Ronald.Stouffer@noaa.gov](mailto:Ronald.Stouffer@noaa.gov))
  - If we missed one of your important points in the synthesis of the survey, please also contact us.
- An up-to-date version of this synthesis will be placed on the CMIP Panel website at <http://www.wcrp-climate.org/wgcm/cmip.shtml>
- Eventually turn this into a peer-reviewed paper on “CMIP5 lessons and looking forward to CMIP6”

## II. Synthesis of Responses we have received so far

5. CMIP5 experiment design
6. Emissions / forcing for historical and RCP experiments
7. Standard output
8. specially prepared output
9. Model and experiment documentation
10. Data search and support
11. Timeline
12. Key science gaps that should be addressed by CMIP6
13. What else is missing?
14. Additional Comments

# Responses received so far (Date: 4 August 2013)

**Virtually all responses very positive on the value of CMIP**  
**Lots of enthusiasm to improve/change CMIP experiments**



Many thanks to everyone who replied!

Your comments (some very detailed) will be very useful in the planning of CMIP6



## 5. CMIP5 experiment design (see Taylor et al., BAMS, 2012)

(i) General scientific focus like balance between simulations primarily focused on projections versus those designed more for advancing understanding

INDICATE WHAT WENT WELL?

### CMIP5 Model Groups

#### Overall:

- CMIP5 has created an enormous resource and enabled a large amount of science. This science has fed into many papers, and hence has been influential in IPCC AR5 (across working groups).
- The balance was ok, others more critical
- Even though development of the RCP process very complex – across all 3 IPCC WGs – it produced 4 fairly reasonable future scenarios for GHG

#### Simulations

- The idealized experiments were extremely useful for model evaluation, conceptual work, and as a benchmark for comparing with other models or comparing among other experiments.

### Users

#### Overall:

- This was a success, resulting in a breadth of experiments run with consistent model versions. Large number of coherent simulations allow to study a lot of things.

#### Simulations

- Large number of idealized simulations very useful.
- Emissions vs concentration simulations very useful for understanding carbon cycle uncertainty in RCP simulations.

#### Models

- High-top models and models with interactive carbon cycle, aerosols, chemistry part of CMIP5

#### Number of Models and Simulations

- Large number of models helped in the assessment of the robustness of future projections.

## 5. CMIP5 experiment design (see Taylor et al., BAMS, 2012)

(i) General scientific focus like balance between simulations primarily focused on projections versus those designed more for advancing understanding

INDICATE WHAT WENT NOT SO WELL?

CMIP5 Model Groups	Users
<p><b>Simulations</b></p> <ul style="list-style-type: none"> <li>Given their limited cost, idealized experiments could have been encouraged more strongly and/or multiplied (e.g., aquaplanet).</li> <li>Scenario runs gave at most an illusion of greater understanding. Settling on one standard scenario and complementary, but more idealized, experiments (8xCO<sub>2</sub>, ramp-up/ramp-down, specified land cover changes), would be much more useful than having many scenarios.</li> </ul>	<p><b>Simulations</b></p> <ul style="list-style-type: none"> <li>Too many RCPs (e.g., one medium scenario would have been sufficient)</li> <li>AMIP simulations not systematic</li> <li>Abrupt4xCO<sub>2</sub> should have been run to equilibrium</li> </ul> <p><b>Number of Models and Simulations</b></p> <ul style="list-style-type: none"> <li>Large number of experiments is overwhelming for many groups, and results in a sparsely populated matrix, which makes analysis of many interesting questions difficult.</li> </ul>

# 5. CMIP5 experiment design (see Taylor et al., BAMS, 2012)

## (i) General scientific focus INDICATE SUGGESTIONS FOR IMPROVEMENTS / FOCUS FOR CMIP6

### CMIP5 Model Groups

#### Simulations

- Even stronger focus on understanding (i.e. idealized experiments) and model evaluation
- The whole CMIP effort could be split into several –MIPs, so as to allow individual groups to take part only to those experiments which are of interest.
- Some of the new experiments were still at a pioneering stage. In CMIP6, we should repeat these experiments, revising the experimental design based on the lessons we learned

#### Number of Models and Simulations

- Consider a reduction in the number of simulations – both the mandatory core and other tiers (for example, are 4 scenarios instead of 2 that useful?)

### Users

#### Simulations

- More focus on idealized experiments to tackle CMIP5 science gaps, in close connection with WCRP Grand Challenges
- Make the core idealized experiments easier for modeling groups to run – e.g. simplify idealized experimental design to reduce the need different SST forcings
- Ensure, as much as possible, continuity with CMIP5. CMIP6 should be an opportunity for modelling groups to provide the CMIP5 expts/outputs they did not provide at the time of CMIP5.
- Special focus on the “Now” period (1970-2030)
- Greater focus on diagnosing aerosol forcing and in performing standard simulations driven by aerosols alone.

#### Number of Models and Simulations

- Keep the core small / reduce number of simulations and increase the level of mandatory cases to have enough models in those.
- Submitting several near identical versions of a model not very informative.
- Highlighting which experiments would benefit from many model centers performing them and which could be satisfied by a smaller number. More generally the question of how many models we need is an open question.

## 5. CMIP5 experiment design (see Taylor et al., BAMS, 2012)

### (ii) Multi-tier approach

- **The core/tiers approach was a very good choice and should be maintained**

- The large number of experiments had very large resource implications. While the prioritization in “tiers” was helpful, there was still a sense that doing more was better.
- Large concern on the data storage needs for CMIP6.
- Single set of core experiments, with a single second tier, rather than near-term and long term experiment categories, both with their own tiers and cores.
- Balance between “Tier-1” and “Tier-2” experiment groups were not well designed. The number of “Tier-1” experiments was pretty heavy compared to “Tier-2”.
- Modeling centers with limited resources should be encouraged to contribute usefully (e.g. with “large enough” ensembles and/or “high enough” resolution) to some experiments (e.g. D&A and/or decadal) rather than to do a bit of everything.
- **Strengthening and slim-lining the multi-tiered approach**
- identifying a few **scientific goals** for the intercomparison would be helpful
- i.e., a stronger but more conceptual and **hence small group of core experiments**; with a **second (but not third) tier of experiments reflecting a select group of important emerging science questions.**
- Here taking advantage of the **WCRP grand challenge** initiative seems particularly opportune.

# 5. CMIP5 experiment design (see Taylor et al., BAMS, 2012)

## (iii) Decadal/long-term/atmosphere-only options

- Good but, given their cost, decadal hindcasts could appear as tier experiments.
- Coordinated experiments work most poorly a coordinating body comes up with a new experimental design, largely untested and not well constrained, that seeks to break new scientific ground.
- The decadal prediction experiments did not seem as well thought through as one would have liked.
- The documentation on the experimental design was not sufficiently clear (e.g. starting points).
- The 30-year initialized runs are not that useful. Better many more start dates and shorter
- Groups were asked to increase the number of start-dates (from every 5-year to – possibly - every year) at a very advanced stage of the “production” of CMIP simulations
- Large amount of effort went in to create the high frequency CMIP5 decadal prediction output. Do we really need so many sub daily fields?

### Recommendations WGSIP (to be further discussed):

- **Start initialized decadal predictions on 1 November** to allow analysis of the first winter and indeed the first year without weather predictability giving a false impression of long range predictability.
- **Start initialized predictions every year rather than every 5 years** for statistical sampling reasons
- **Decadal experiment with idealized future volcanic eruption**
- Given that there is scant evidence for any skill from initialization beyond 5 year lead times could we **not simply make 5 year hindcasts next time for near term prediction?**

### Others:

- More model variations (High/low res of same model / More models using different parameterizations)
- Standardized metrics and methods for verification

## 5. CMIP5 experiment design (see Taylor et al., BAMS, 2012)

### (viii) Adequacy of experiment descriptions

Overall good; What went not so well:

- There were inevitable departures from the experiment design/protocol by some groups. The experiment plan was a reasonable overview for scientists, but **hides some complexity** when used as a specification for configuring and managing model runs. => **hidden work at some modelling centres, inconsistencies in the delivered data**
- Changes of experiment protocol (addition of decadalYYY[2-4,6-9], extension of historical) when the simulations were in operation was somehow disturbing
- Processes that finalize the CMIP5 protocol were not very open to all the modeling centers
- Point of confusion was the use of **both an experiment numbering scheme and experiment naming scheme.**
- The specification of anthropogenic aerosols in AMIP experiments could have been precised.
- Better specification of possible MISC D&A experiments.

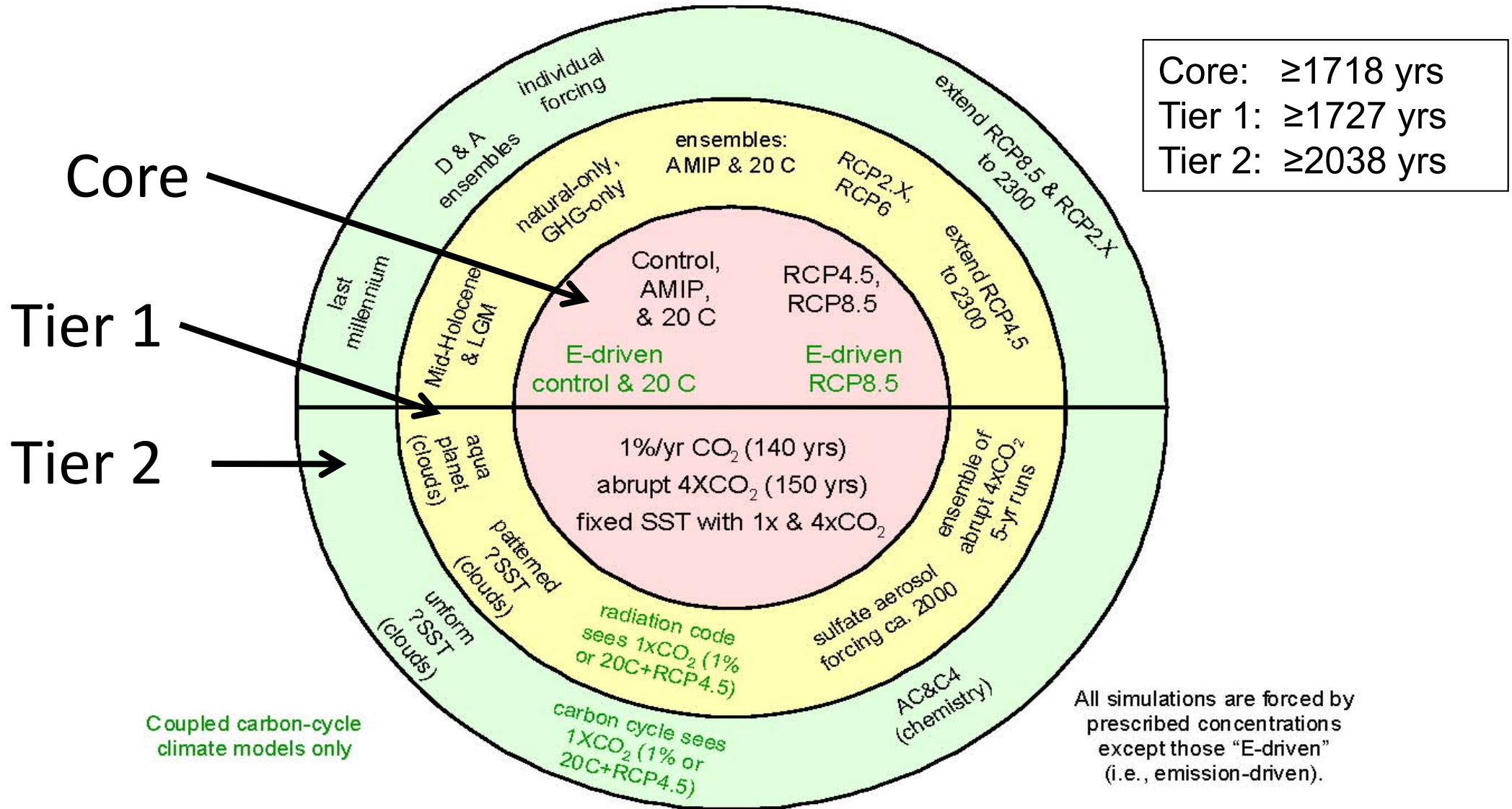
## 5. CMIP5 experiment design (see Taylor et al., BAMS, 2012)

### (iii) Missing Experiments

- More long term experiments (SSPs included for CMIP6, aerosol range, LU range, CH4 range, 3.7w/m\*\*2 forcing exp, overshoot exp, target temperature scenarios, ...)
- D&A – individual forcing runs
- Aerosols – experiments to yield more details of response
- Component-only experiments like AMIP – Ocean (CORE) and land surface (GSWP)
- Decadal Prediction – future volcanoes rethought, data assimilation exp, SI-like exp
- Future volcanoes in long term exp.
- Parametric studies – table of IC vs model parameters – evaluate impact on simulation



# AR5/CMIP5 Long Term Experiments

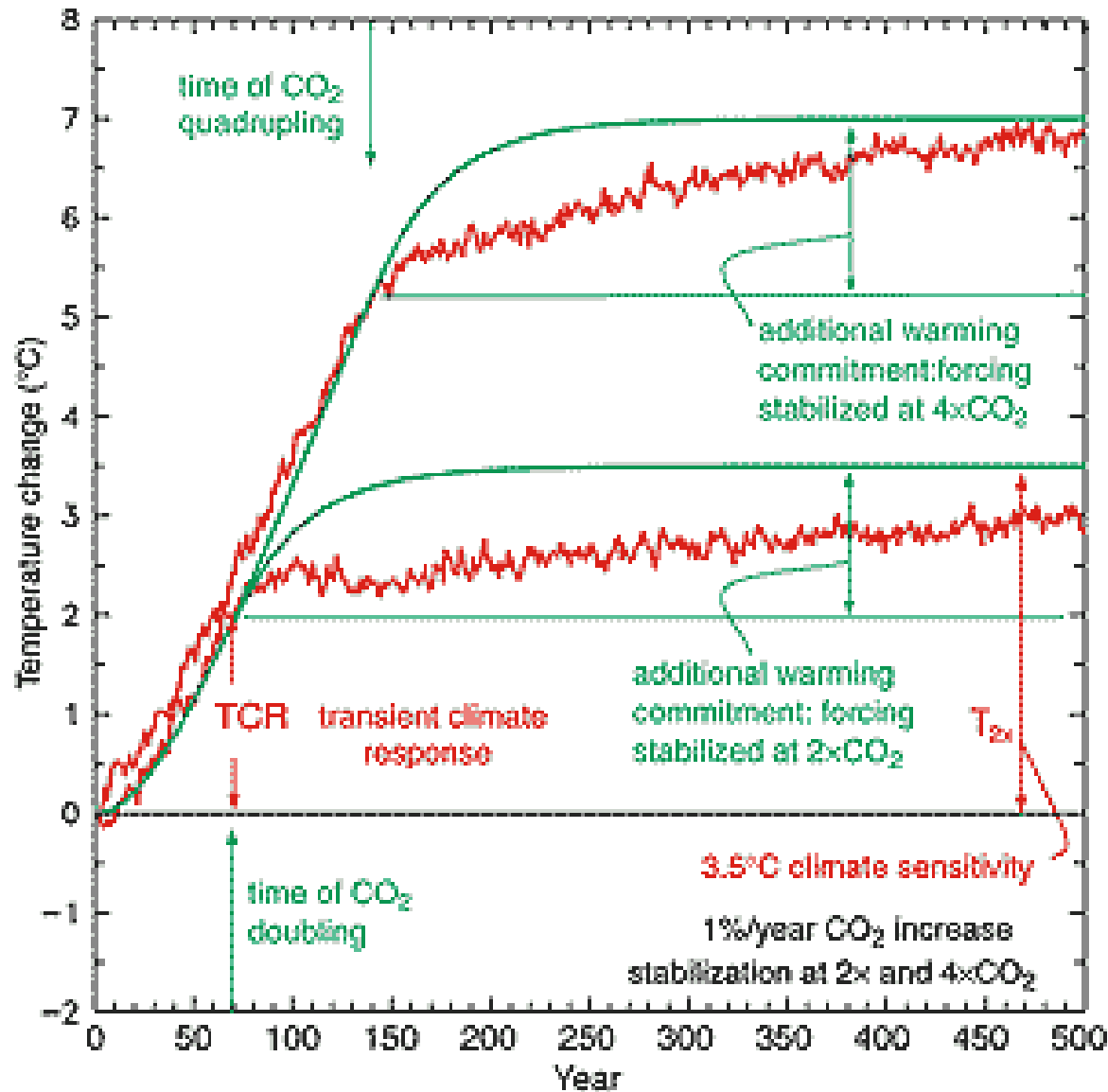




# Core Idealized Experiments

- 1%
- 4XCO2 switch-on
- Atm-only using today's SSTs and 4xCO2 SSTs
- Suggestions
  - D&A – Run individual forcings alone
  - Looking for non-linear responses (How?)
    - 2x vs 8x?
  - Better radiative forcing estimates
    - Run atm-only using today and future SSTs
- Idealized aerosol exps using 1 RCP as base
- Investigating regional forcing/response relationship
- Design experiments which help identify cause for differences in model feedbacks
  - Radiative forcing:
    - Cloud = CFMIP
    - Snow/ice albedo = Who “owns” it?
    - Lapse rate = ?
    - Oceanic heat uptake = ?

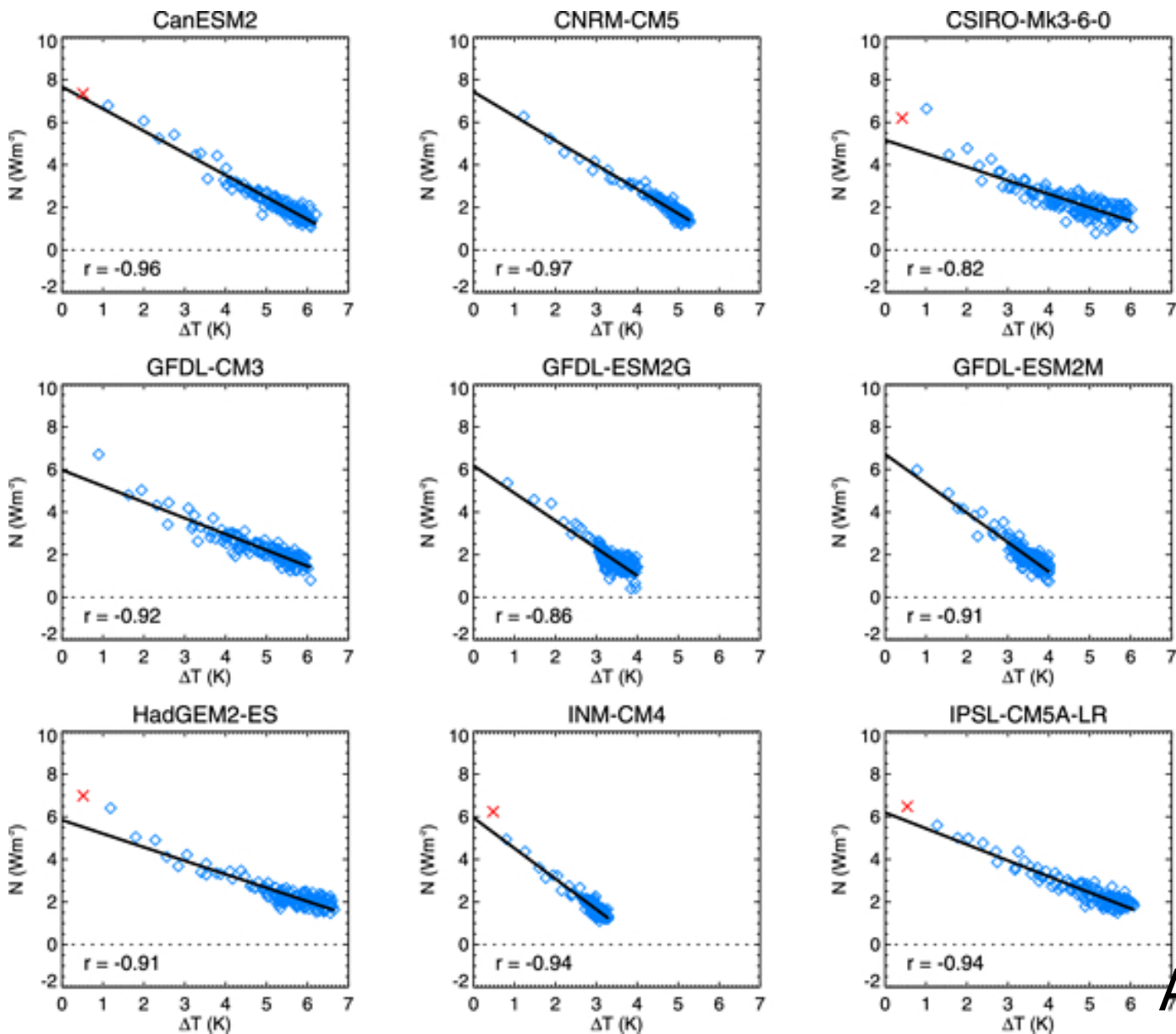
## Idealized 1% CO<sub>2</sub> Increase



- Forcing nearly the same across models
- Easy to compare difference in model response
- Defines TCR
- Many interesting science questions

IPCC WG1 AR4

# 4xCO<sub>2</sub> Switch-on



- Used to estimate equilibrium climate sensitivity
- Note: There are problems with method.

Andrews et al. GRL 2012

## Suggestions Misc

- Resolution increase on atm side (<20km)
- Glacial-Interglacial – PMIP issue
- Observed extreme event studies
  - Initialize models 1-2 yrs prior past event
  - Investigate predictability
  - Covered if start dates become once or twice per year
- Ocean – diagnose eddy fluxes (WGOMD)
  - Param eddies/eddy permitting/eddy resolving

## Implementation of AMIP runs in CMIP6

- What to use for SST and SEA ICE fields?
  - Historical observations for SST
  - What to use for historical Sea Ice?
  - Where to get SSTs and Sea Ice?
    - Typically use center's own results (remember other models not available to end of process)
  - Monthly averaged coupled model output
    - Inter-model differences in lower boundary conditions (SST and Sea Ice) will affect results

## 6. Emissions / Forcing for historical and RCP experiments

INDICATE WHAT WENT WELL AND WHAT WENT NOT SO WELL?

- Switching from SRES to RCP was a good point.
  - Common concentration and emissions data available for aerosols and short-lived species
  - Future Land Use scenario exist
  - Harmonization between future and past emissions
  - CMIP5 models all consider past ozone depletion and future ozone recovery
  - 4 RCP scenarios were simple and comprehensive in terms of GHG (but not aerosols)
- 
- **Present-day (2005) too far in the past**
  - **Forcing data were produced very late in the CMIP5 process.**
  - **Radiative forcing not properly diagnosed**
  - **Aerosol and land use future scenarios did not span uncertainty range**
  - Land use implementations vary a lot from model to model => big impact on C changes
  - Despite so many gases available, some major ones slipped through the net – e.g. gridded CO2 emissions
  - No scientific check on consistency across datasets (e.g. does the land-use forcing match the biomass burning forcing regionally?)
  - Some odd choices in forcing extensions (such as zero wood harvest for RCP extensions that we are using for ESM integrations)
  - Not all models used specified forcing concentrations.
  - Not all of forcing data were specified on the CMIP5 website (e.g. stratospheric aerosols missing)
  - Standardized no policy scenario not available
  - Possible changes in geographical distribution in the future not properly considered
  - Future Fossil Fuel emissions not gridded
  - Land use beyond 2100 are not available

## 6. Emissions / Forcing for historical and RCP experiments

### INDICATE SUGGESTIONS FOR IMPROVEMENTS / FOCUS FOR CMIP6

- **Provide standard ways/suggestions on diagnosing forcing in the models**
- Establish a working group early on in the process that defines how to better and properly diagnose forcings in CMIP6.
- **For CMIP6, all observed forcings should be updated until 2015**
- Provide spatial and temporal CO2 emissions for the future scenarios
- The forcings that the models actually see were not available in CMIP3 or CMIP5. They should be included in the standard diagnostics.
- **New land use and aerosol scenarios**
- Natural emissions, biomass burning, require more attention in scenarios
- Volcanic forcing is assumed zero in the future which is not correct.
- More well-defined protocols for natural forcings (volcanic, solar).
- **Data available in timely manner and gridded**
- All models to include all forcings.
- Merging past/future forcing for “past1000” should be provided and not left to the groups.

## 7. Standard Output

### Things that went well

- Clear description of most vbls
- Basic aerosol data archived
- Huge volumes of data available in stand format

### Things that went poorly

- Software for moving data and/or analyzing data without moving (BADC)
- Newer vbls (biogeochemical and aerosols) need more work
- Groups did not provide grid interpolators (hori and vert)
- Hard to interpolate unto common grid
- Ocean grid information incomplete (box edges, partial boxes – need volumes)
- Large amount of data to be processed



# 7. Standard Output

## Suggestions

- Better aerosol diagnostics
- Provide info on missing atm vertical coordinate
- Is high frequency short term data needed?
- Have an early release of files documenting model grids
- Need archived vbls to have observational framework/footing, particularly in land (and land C)
- Provide grid interpolators
- Separate physical and biogeochemical variable tables
- Atm CO2 emission vbls need work – eg definition of natural and anthro land CO2 emissions
- For concentration runs, archive atm CO2 value – in restoring runs this value is different from the input CO2 value
- Some ocean biogeochem vbls missing – phosphorus example
- Standardize time axis (days or months or years since XXX)
- Standard chunk length (time)
- \*Packing option for vbls to save space

## 8. Specifically Prepared Output

### Thing that went well

- COSP output useful
- 3-D radiative fluxes in 1X and 4X useful

### Things that went poorly

- COSP buggy at first

### Suggestions

- Freeze simulator codes before modeling groups freeze model codes (Japan)

# 9. Model and experiment documentation

## Things that went well

- Massive increase in quality of technical documentation
- Okay first attempt at model documentation

## Things that went poorly

- METAFOR Late
- Hard to use
- No peer review of information
- In end, little help to IPCC authors
- Forms did not “fit” our model framework in many areas

## Suggestions

- METAFOR / ES-DOC
  - Improve process
  - Improve match to model physics and biology
  - Finish development of software sooner
  - More group fill in forms (and sooner in process)
- Is it useful? Who “owns” it now?

# 10. Data search and support

## Things that went well

- Distributed data sources
- ESGF browser (later in process)
- Documentation

## Things that went poorly

- Early ESGF problems
- Funding for nodes is expensive
- Finding rarely used aerosol data difficult
- Browser very difficult for non-climate scientist to use
- Late data (modeling centers late, unclear is missing data due to center or ESGF problem, buggy early software)
- WGET not working

## Suggestions

- Governance needs settled soon – before CMIP6
- Have sfc temperature and precipitation easy to find for non-climate folks
- Provide simpler downloading process for output
- It must be possible to download the CMIP6 data systematically through scripts

# 11. Timeline

## Things that went well

- General timeline went well (although some voices *not much* went well ...)
- “Old” vbls known and did not change
- Core physical data available in time for IPCC

## Things that went poorly

- Experimental design details late
- List of output variables/units/etc still changing late in the process
- Caused problems for existing/archived CMORized data
- Some forcing vbls late
- Small amount of time between the availability of CMIP data and IPCC deadlines
- There was no real timeline for model and experiment documentation

## Suggestions

- Vbls list compiled earlier
- Exp design frozen at earlier date
- Model output request must be made sufficiently far in advance to allow modeling groups to implement and test diagnostics

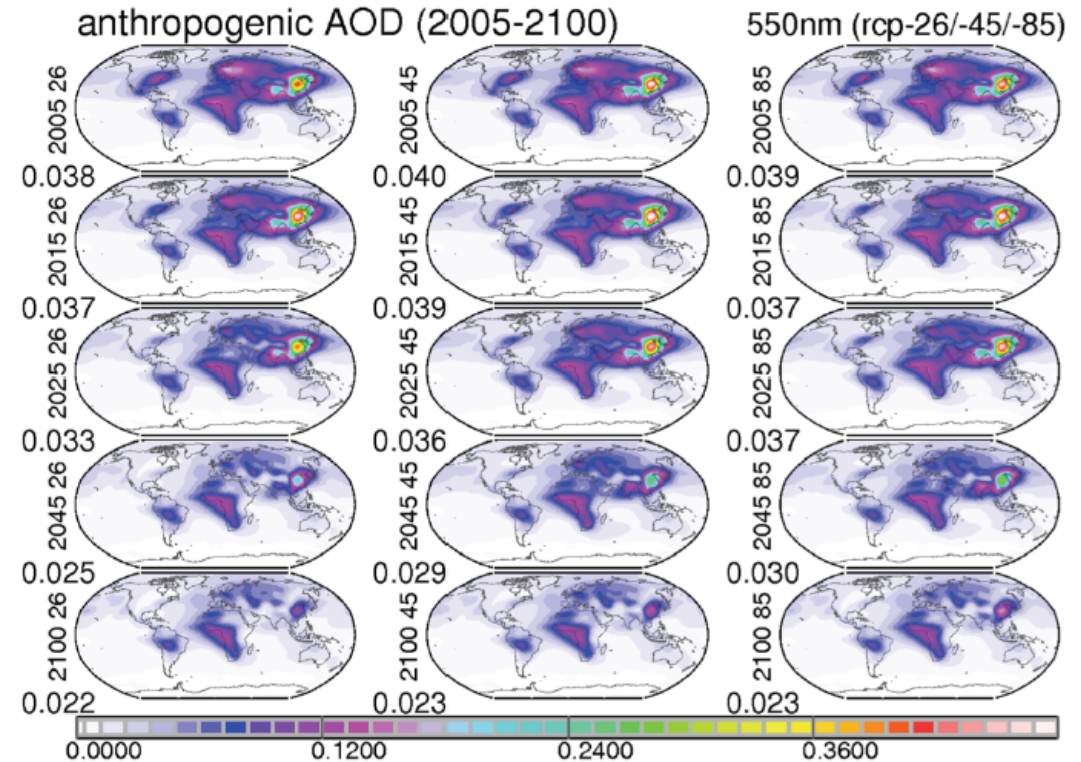
## 12. Science Gaps

- **Some examples that have been mentioned in the responses –  
not including decadal, see presentation by Ben Kirtman**

# Scientific Gaps 1: Aerosols, short-lived species, and methane

## Aerosol Scenarios difficult to distinguish

- **Aerosols do not span a good range in the RCPs**
- **Diagnosing indirect aerosol effects and absorbing aerosol effects**
- **More experiments** (like simplified aerosols) should be devoted to investigate the role of atmospheric aerosols

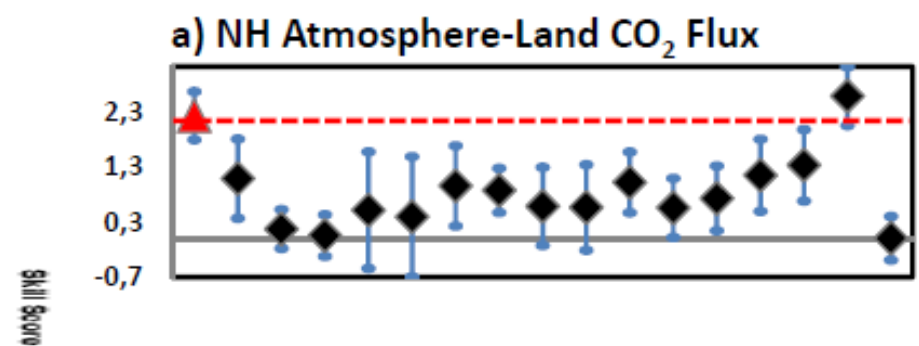
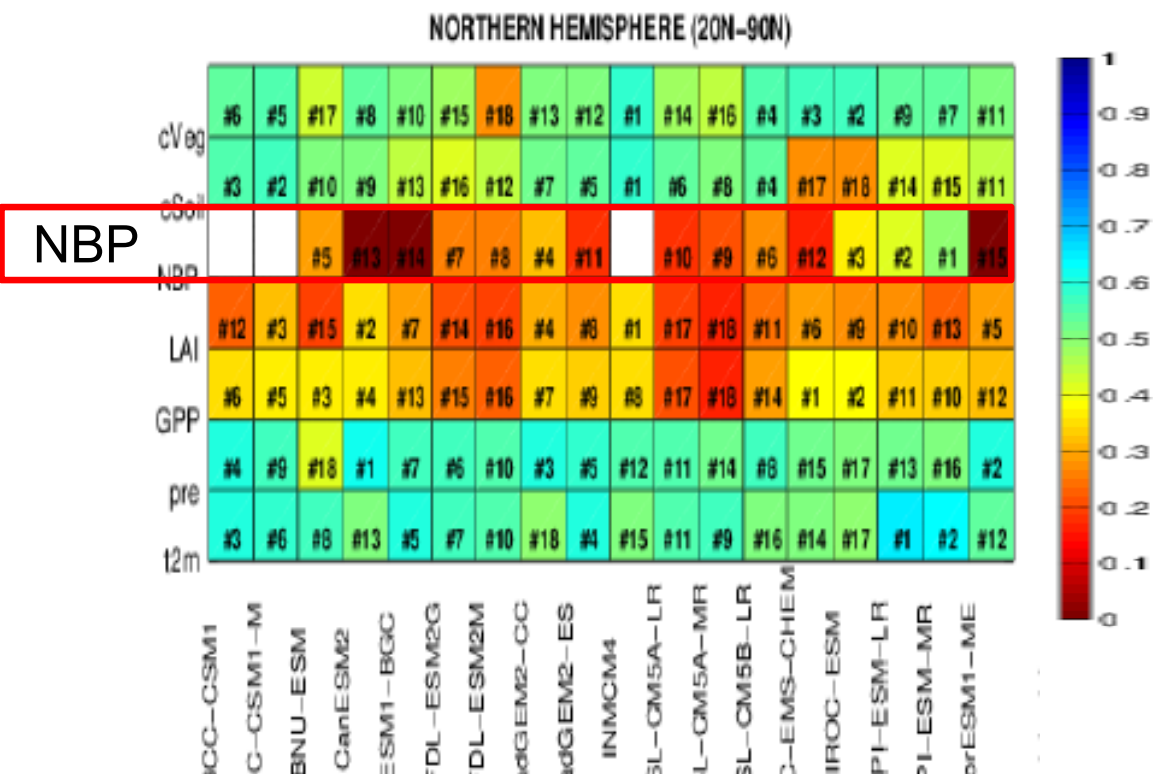


Shown is mid-visible AOD for RCP 26 (left), RCP45 (middle) and RCP85 (right) for different timeslices in the future, ranging from 2005-2030 (top row) to 2100-2125 (bottom row). Global average is indicated by number on bottom left of each plot

- Quantifying the role of chemistry and aerosols in near-time and long-term temperature projections
- Impact of methane emissions on climate

# Scientific Gaps Example 2: Model evaluation, performance metrics

- **Detailed and systematic model evaluation** during the development process could be facilitated by CMIP and the metrics panel.
- **Obs4MIPs** seen as very positive way to improve regular model-obs evaluation, **should be grown**.
- The continued push for **standard performance metrics, readily published and viewable on a central website** (also for providing guidance for impact analyses).
- **Process-oriented evaluation** to understand model biases and error compensation.
- **Centrally coordinated model assessment**
- **Code repository** (e.g. at WGNE/WGCM Climate Metrics Panel Website)
- **Standardized diagnostic and performance metrics package that runs on the ESGF**



- In the NH over land almost all models systematically underestimate the sink, reflecting absence of sinks due to nitrogen deposition or poor representation of forest regrowth.

*Anav et al., 2013*



## Scientific Gaps Example 3: Better Diagnosing of Forcings

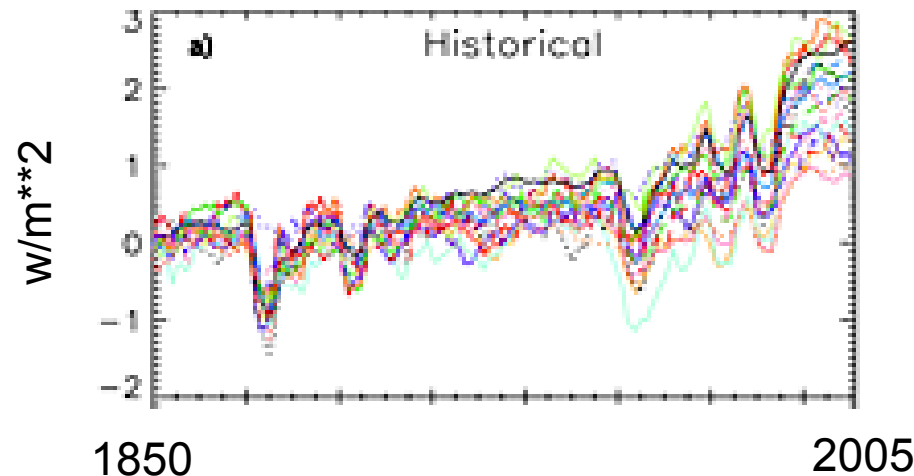
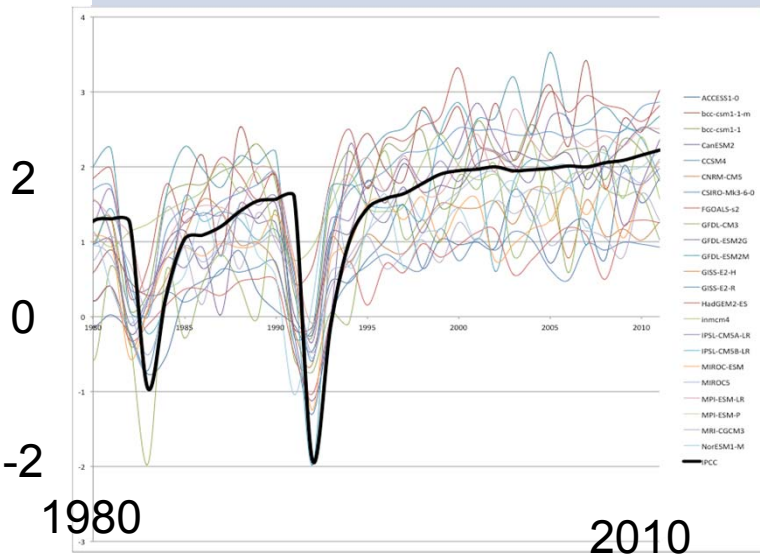
### CMIP5/IPCC AR5 state of play

1. Offline **RF** estimates from MAGICC
2. CO2 **ERF** from Gregory method and 4xCO2 runs
3. Forster and Taylor method for time-varying **ERF** (historical and RCPs)
4. ACCMIP and AEROCOM time-slices for model subset and some fixed SST runs (**mix of RF and ERF estimates**)

# Scientific Gaps Example 3: Better Diagnosing Forcings

2.Consistency of approaches: Often not making a like-for-like comparison when comparing studies

Method	Pros	Cons
RF – double radiation call ideally with stratospheric adjustment	Good for offline tests of radiative transfer and line by line model comparisons	No one really does this now in a AOGCM environment - too much human time
ERF- from regression	Easy to do with standard diagnostics	Doesn't work for small forcings, noisy method, no regional forcing pattern
ERF from fixed SST	Less noisy than regression, gives regional patterns	Time-slice forcing only; very few runs done in CMIP5



Figures  
Courtesy of  
Piers Forster

## Scientific Gaps Example 4: Spread in model response

- Spread in model response still large even when natural variability taken into account even on the largest scales. Why?
  - Differing sub-grid scale physics implementation from model to model
    - Aerosols – some models predict own concentrations, some do not
    - Aerosol-cloud – some include parts of the indirect aerosol-cloud effect
      - Parts included vary model to model
      - None have “complete” aerosol-cloud physics (rjs opinion only!)
    - Land use change and more generally land carbon components vary a lot from model to model – especially important for C fluxes
    - Model resolution in all components
      - Particularly in the ocean (ocean eddies)
      - 
      -
  - All of above will continue to be CMIP6 issues
- Importance of 1% CO<sub>2</sub> increase run and potentially a standard 20C run

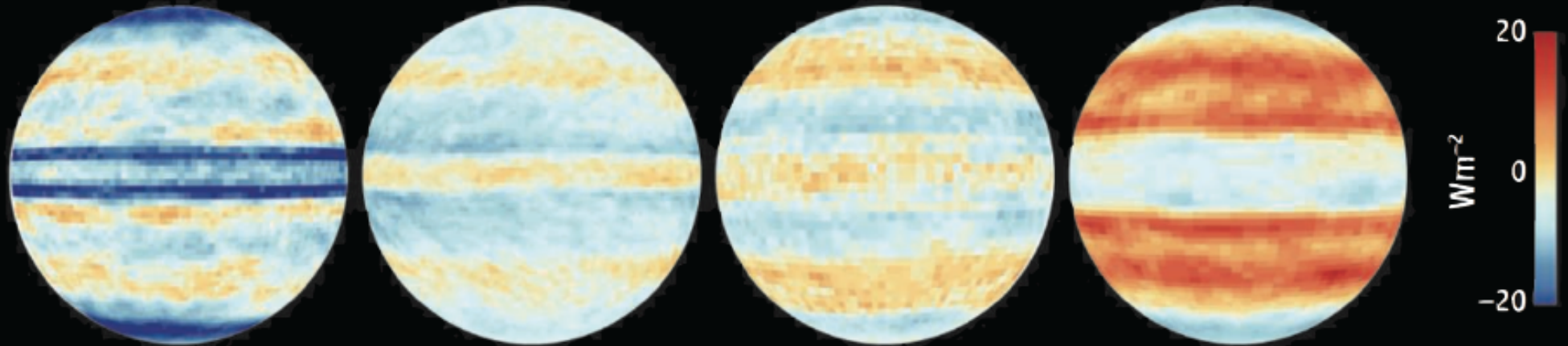
## Scientific Gaps 5: Example Clouds (CFMIP)

- Incomplete implementation of CFMIP experiments/outputs
- Lack of process diagnostics in coupled idealized experiments.
- Inability to accurately diagnose time varying forcings and feedbacks from models during the 20th Century period
- Understanding the role of cloud and precipitation CO2 adjustments in coupled model response patterns
- Impact of clouds and cloud changes on regional temperatures, circulation and precipitation
- Identifying which parts of model physics contribute most to inter-model differences in cloud feedbacks.
- A CMIP approach to developing and testing physical hypotheses and observational constraints using sensitivity experiments.
- Identifying causal links between cloud controlling factors and cloud responses to climate forcings and warming. New idealized experiments?
- The gap in the experimental hierarchy between global GCM experiments and cloud resolving model/super-parametrization experiments is still large.

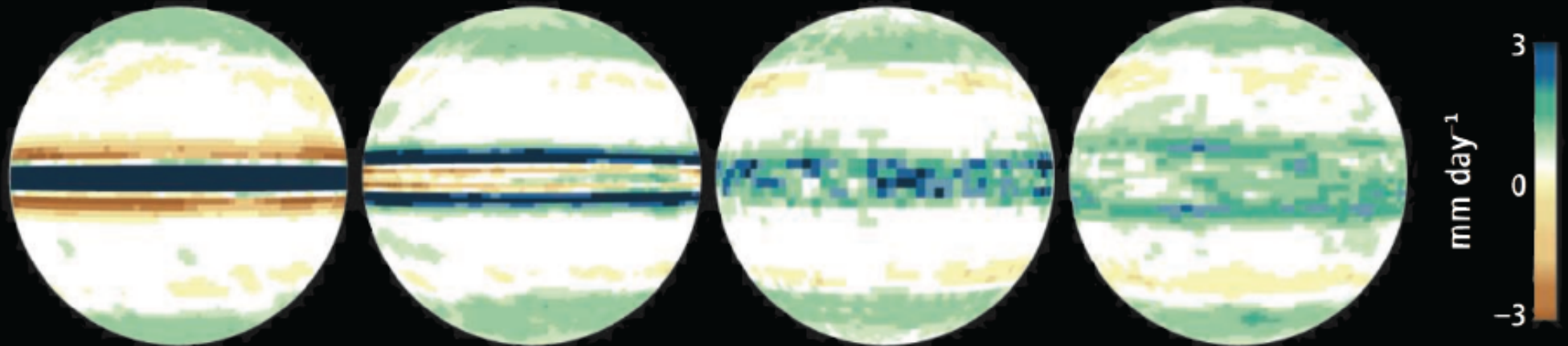
# Coupled vs Earth System Modeling

# Idealized Aquaplanet

## CHANGE IN CLOUD RADIATIVE EFFECTS



## CHANGE IN PRECIPITATION



MPI-ESM-LR

MIROC5

FGOALS-G2

IPSL-CM5A-LR



## Scientific Gaps Example 6: Scenarios

- Covered earlier in talk
- Just list a few here
  - Aerosol and land use changes range in future
  - New future scenarios to 2100
  - Scenarios beyond 2100 (stylized/idealized?)
  - Historical/Future boundary (2005, 2010, 2013, 2015, ??)
  - Land ice scenario?
    - Coupling meltwater to ocean will have potentially large impact
    - GEIOD changes incorporated?

# 13. What else is missing?

## Model Evaluation

- See previous slide

## Model Documentation

- A coordinated description of the models in the literature
- Inclusion of modeling groups in CMIP description.
- More transparency in terms of model tuning/calibration

## Data handling

- Better feedback to modeling groups on the use of their data.
- Some better ability to inform data users of when errata for published data sets are available
- A summary of available model output in the CMIP archive: details of variables archived in each case, would be helpful.
- DOI-like label for data
- Better recognition for modeling groups when their data is used in analyses (DOI, co-authorship).
- Having a common portal for accessing CMIP3, CMIP5 and CMIP6 data, de-emphasizing different CMIP generations, and even perhaps having some simple capacity for filtering models based on meta data or climate indices so as to develop ensembles of data from the CMIP family would be very helpful.



# 14. Additional Comments

Model Groups	Users
<ul style="list-style-type: none"> <li>• CMIP5 has been a huge activity from concept up to present day and is ongoing – our many thanks to all who have made it so successful.</li> <li>• The CMIP5 experimental design was very large, binding lots of resources. This was a chance to get access to more resources than the institute has available normally and to collaborate more closely across the institute.</li> <li>• Possibly have major revisions to CMIP be once a generation (on a 15 year timescale) and in between (perhaps even more frequently than once every seven years) to augment the protocol around specific MIPs that address science gaps.</li> <li>• “Recommendation report” for scientists, providing guidelines for future model developments and planning of the next CMIP.</li> </ul>	<ul style="list-style-type: none"> <li>• From our perspective, CMIP5 has been a huge improvement on CMIP3, and we should celebrate its success.</li> <li>• Identify which data have been least accessed to help prioritize diagnostics and reduce data volumes for transfer in CMIP6.</li> <li>• There needs to be a clearer recognition of the importance of delivering societally relevant information efficiently.</li> <li>• IAMs employ socio-economic information in their scenarios, and increasingly GCMs-ESMs also use such information. Ensure that, when running different IAM scenarios, the appropriate socio-economic variables are consistent across the entire model.</li> </ul>



## **III. Way forward in the planning of CMIP6**

*Some initial thoughts from the CMIP Panel and WGCM Co-Chairs*

# Remarks on CMIP's future (for discussion)

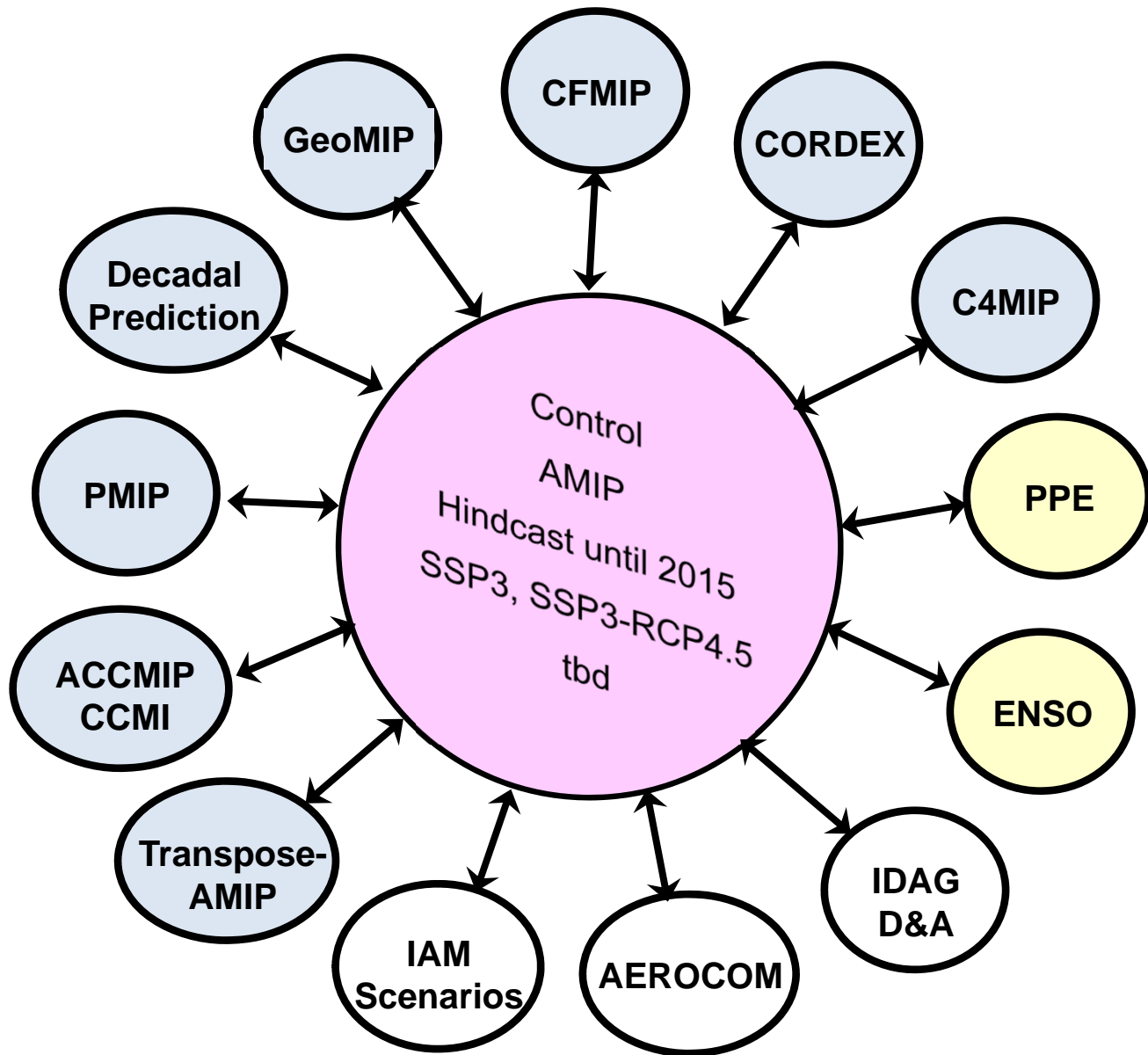
- Value of multi-model ensemble has been established and very successful
  - CMIP has had a huge impact on the IPCC and climate community in general.
  - Most modeling groups have completed the core expts in all CMIPs to date and have also performed several of the first and second tier expts.
  - It is important to keep the core solid and relevant to the modeling groups and the MIPs
  - How closely coupled should CMIP be to IPCC? (Schedule, scenarios, etc.?)
- CMIP has subjected models to wider scrutiny
- Resources devoted to CMIP tax modeling groups heavily
- Current structure of CMIP has heavily taxed a few individuals to manage/oversee CMIP process
  - As CMIP grows, this structure is NOT sustainable.

# Remarks on CMIP's future (for discussion)

## Suggestion of a more distributed organization:

- Establish a set of benchmark (core CMIP) experiments that would
  - Be done anyway by most groups as part of the development cycle.
  - Be revisited whenever a new model was developed
  - Are required by or the basis for all Model Intercomparison Projects
  - Evolve only slowly (10-15 yr time scales)
  - Continue to have input into IPCC process
  - CMIP Panel continue to manage the details of these experiments,
- Around these core experiments build additional, specialized intercomparisons that would make use of the same standards and infrastructure.
  - Individual MIPs manage details of experimental design and variable lists and etc.
  - CMIP Panel has oversight/approval of above **IF** a MIP is part of CMIP

# Suggestion CMIP6 Experiment Protocol



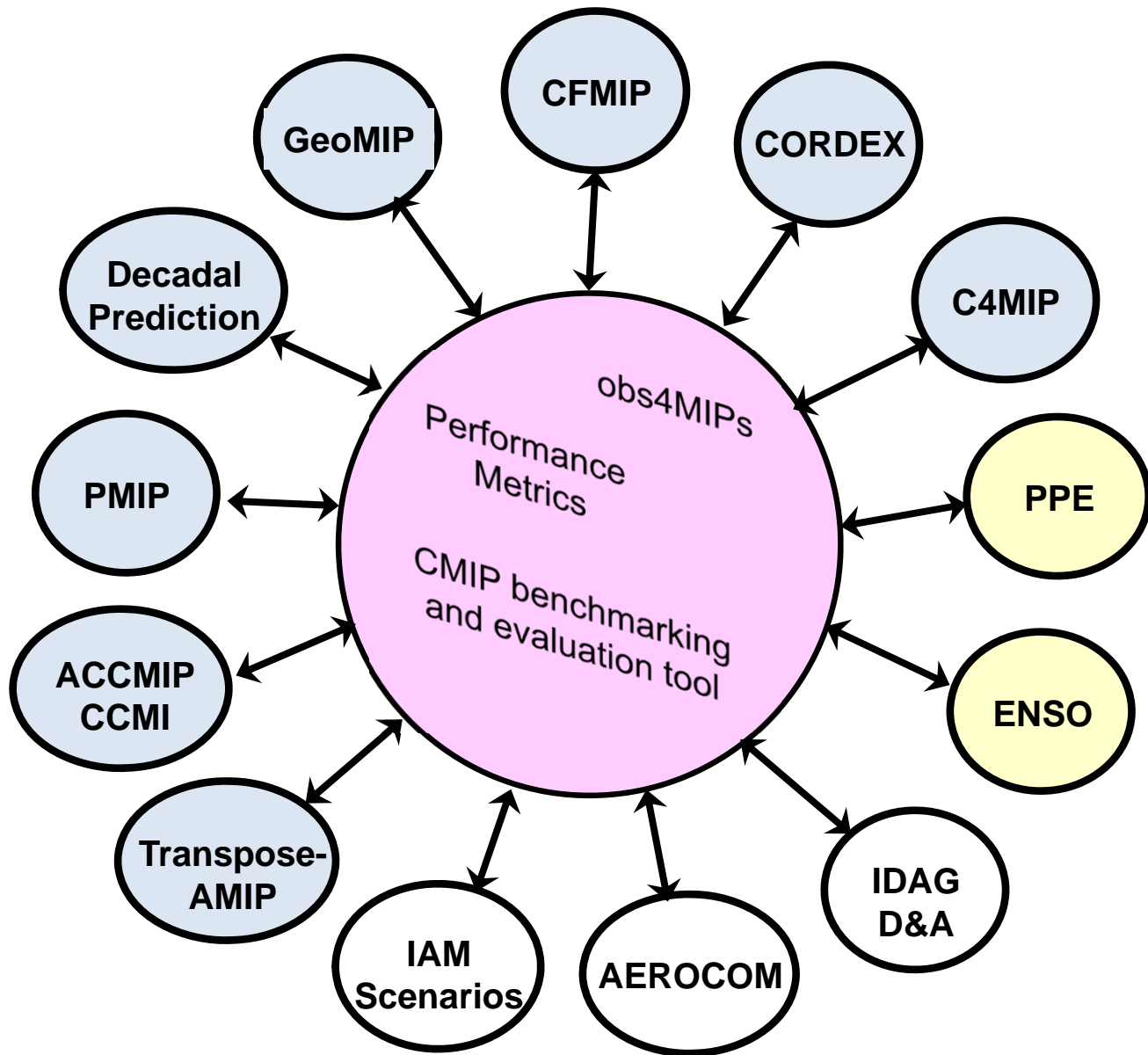
## CMIP Panel to

- Define Core Simulations with the community
- to approve experiments and variable lists etc.

## MIPs to provide:

- Science gaps
- Suggested model simulations to tackle these
- Experiment design
- Output list for CMIP6 data request
- Timing

# Routine Evaluation and Benchmarking Integrated Part of CMIP6



**CMIP Panel to work in close collaboration with obs4MIPs, MIPs and the WGNE/WGCM climate metrics panel, WDAG, and WMAC**

## **MIPs to provide:**

- Recommendations for model diagnostics to evaluate models
- Recommendations for observations for model evaluation
- Recommendations for performance metrics
- If possible: code to be included into the CMIP benchmarking and evaluation tool that should run routinely on CMIP6 models as soon as the runs are submitted

## Discussion points

- CMIP structure/work load has to become more distributed
- Small core used to qualify models?
- May be static over several generations of a particular MIP, and may even be used to qualify several generations of models?
- With a small, rather static, core rerun each new release of a model (e.g. on a two year time schedule), so that it could be used by MIPs whenever, and its control runs (which are made anyway) made available to the wider community.
  
- We propose a strawman here. Is this the right direction?
- We are putting more responsibility on the MIPs. Welcome it?
- How do group outside of WCRP/WG1 get involved? Where are the connections for their input?