



Ted Shepherd
Regina R Rodrigues

World Climate Research Programme

My Climate Risk

45th Session of the WCRP JSC
Lima, 27-30/05/2024



Motivation

Small is beautiful: climate-change science as if people mattered

Regina R Rodrigues, Theodore G Shepherd 

PNAS Nexus, Volume 1, Issue 1, March 2022, pgac009,

<https://doi.org/10.1093/pnasnexus/pgac009>

Grappling with complexity of local situations...

...by expressing climate knowledge in a conditional form

The importance of simplicity when dealing with deep uncertainty...

...through the use of physical climate storylines

Empowering local communities to make sense of their own situation...

...by developing “intermediate technologies” that build trust and transparency

Goals

To develop and mainstream a bottom-up approach to climate risk starting from decision context and scale

Our challenge in MCR is how to develop robust methodologies that do this in a way that empowers local communities and can challenge the apparent 'objectivity' of top-down approaches (cf. Rodrigues & Shepherd 2022)

To build an ecosystem of communities of practice, especially in the Global South

- ✓ This will be a legacy for the WCRP climate science community
- ✓ Our challenge in MCR is to build a self-sustaining mycorrhizal network



Our vision



World Climate
Research Programme



My Climate Risk



Regional Hubs

Foster a non-hierarchical ecosystem of labs/communities of practice, like a *mycorrhizal network*, sharing resources rather than competing for them, and anchored by 'mother trees' in the form of regional hubs

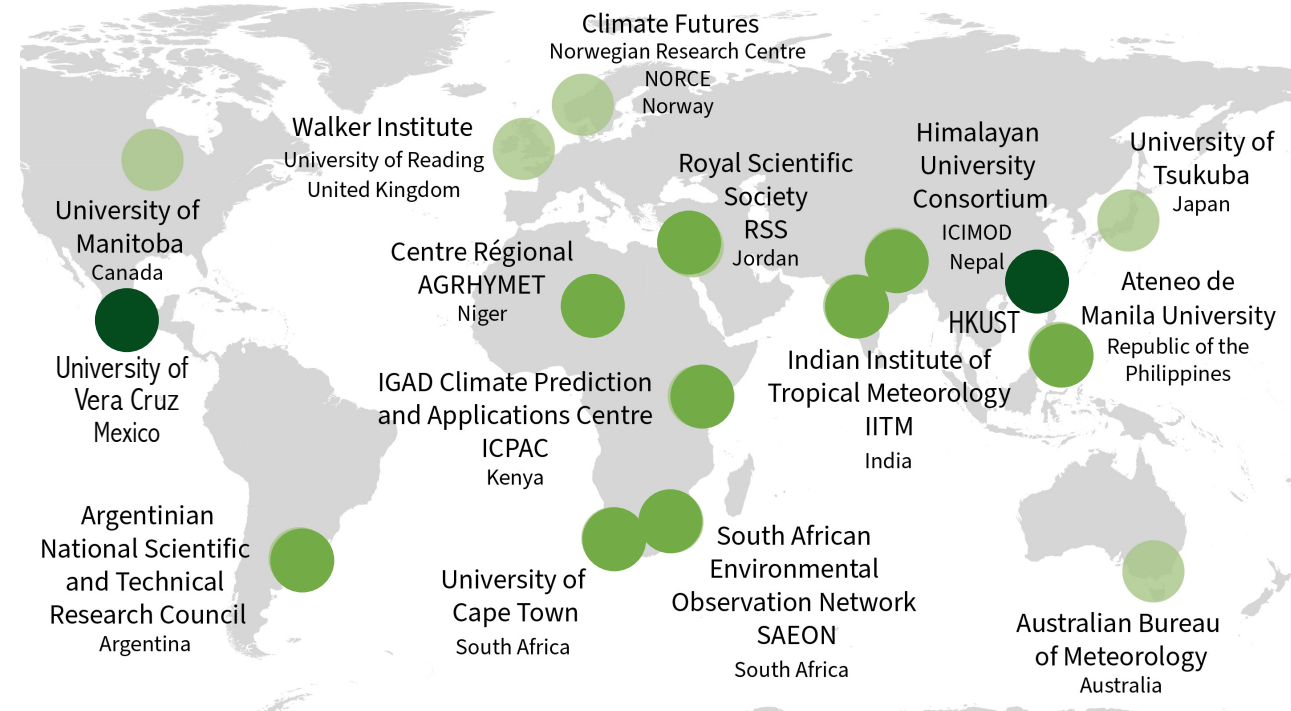


Concept of Wood Wide Web by Suzanne Simard

Our structure

- ✓ Hubs need to be anchored in a *local institution*
- ✓ Hubs need to share the *bottom-up* approach of MCR
- ✓ Priority is to reach *regions not well represented* within WCRP
- ✓ See the *MCR website* for FAQs about hubs

Network of MCR regional hubs



As of May 2024

● Global North

● Global South

● New Hubs

Research Groups



Consolidation of the Education Working Group

- ✓ To share or develop training materials between the hubs and strengthen linkages with the WCRP Academy
- ✓ Led by MCR SSG member Vandana Singh
- ✓ Webinars to gain an understanding of what it means to decolonise climate science and education

Establishment of an Early Career Research Group

- ✓ To provide an entry point into MCR for ECRs who are not affiliated with a hub
- ✓ Led by Julia Mindlin and Fiona Spuler
- ✓ Will help develop MCR methodologies

General Assemblies



My Climate Risk



Third MCR General Assembly

- ✓ 16 May 2023
- ✓ 2 two-hour sessions
- ✓ 1 for each hemisphere: Eastern and Western Hemispheres
- ✓ Restricted to members
- ✓ Report is available online



Fourth MCR General Assembly

- ✓ 03, 16, 17 May 2024
- ✓ 3 four-hour sessions
- ✓ 1 for each time zone: Americas, Africa-Europe, East Asia
- ✓ 1st half hub-led and open to all hub participants
- ✓ 2nd half restricted to members
- ✓ Report will be available online

WCRP OSC



My Climate Risk

Kigali, Rwanda, October 2023



WCRP OSC

WCRP

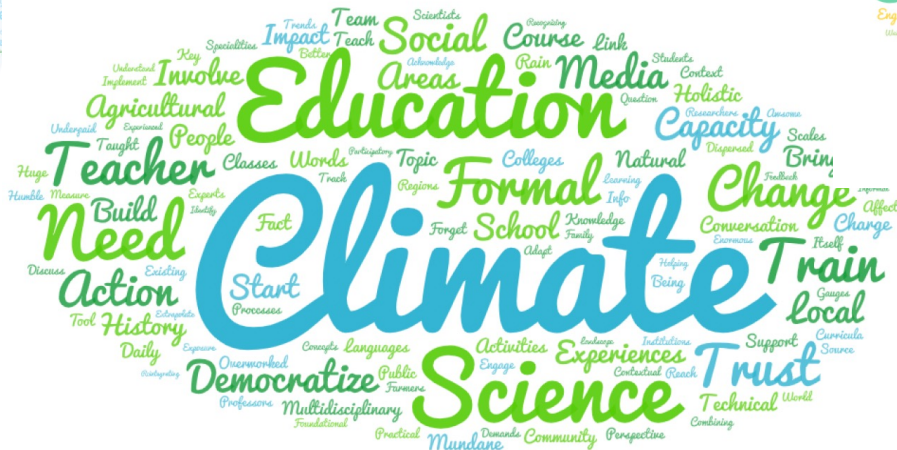
World Climate Research Programme



My Climate Risk

LEARNING LAB – Democratizing Climate Science: making it meaningful at local scales

Our "main event"



Report available from the My Climate Risk website

Other highlights



My Climate Risk



Adaptation Futures Conference 2023

- ✓ 2-6 October 2023, Montreal, Canada
- ✓ Session “All Eyes on 'My Climate Risk': Q-Storming towards Collective Pathways to Adaptation Action, from Local to Global
- ✓ Led by the Walker Institute hub at the University of Reading
- ✓ With participation of several hubs

Recordings are available from the MCR website

Other highlights

Argentina Hub Webinar Series

- ✓ 4 webinars over the austral winter 2023, reflecting on the different perspectives the physical and social sciences have concerning 4 central concepts: risk, storylines, co-development and multiple lines of evidence, with simultaneous Spanish-English translation

The image displays four webinar cards arranged horizontally. Each card features a background illustration of trees and roots. The cards are color-coded and contain the following information:

Webinar	Date	Time (UTC)
1° WEBINAR	27 / 06 / 2023	14:00 - 15:30
2° WEBINAR	25 / 07 / 2023	14:00 - 15:30
3° WEBINAR	23 / 08 / 2023	14:00 - 15:30
4° WEBINAR	27 / 09 / 2023	14:00 - 15:30

Recordings are available from the MCR website

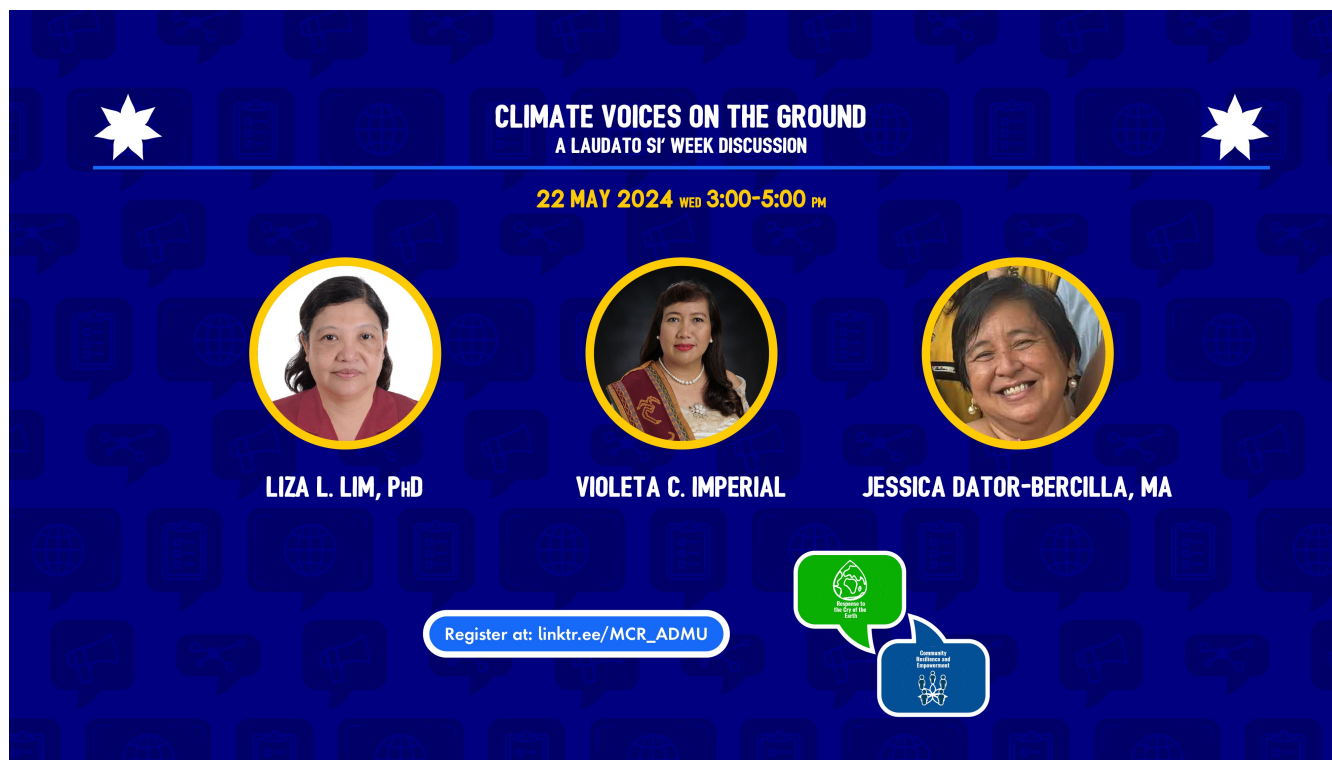
Other highlights

ADMU Webinar series

- ✓ 2 webinar series in boreal spring 2024:


“Climate Voices on the Ground”


“Climate Research ‘As if People Mattered’”




CLIMATE VOICES ON THE GROUND
A LAUDATO SI' WEEK DISCUSSION


22 MAY 2024 WED 3:00-5:00 PM



LIZA L. LIM, PhD


VIOLETA C. IMPERIAL


JESSICA DATOR-BERCILLA, MA

Register at: linktr.ee/MCR_ADMU


City of the Future


Commission on Earth System Governance

Recordings are available from the MCR website

Planned activities

To develop robust methodologies

(and get them accepted by the community)

✓ A special issue of a journal

✓ Influencing pedagogy (Education Working Group, link to WCRP Academy)

✓ Specific training courses (e.g. Walker Institute, pre-COP30 activities)

✓ ECR group is exploring collaborations with groups needing such methodologies across multiple sites, e.g. Red Cross/Red Crescent Climate Centre, BASE initiative

Planned activities

To build and nurture our network of communities of practice

(not just involving the regional hubs but also researchers elsewhere)

✓ In-person meetings involving subsets of MCR members, taking advantage of opportunities where they arise

✓ Local workshops and training schools

✓ Online hub-to-hub collaborations

✓ Various connecting mycorrhizae (e.g. Education Working Group, ECR group, something involving philosophy of science)

✓ More administrative support and/or alternative methods of coordination

Planned activities

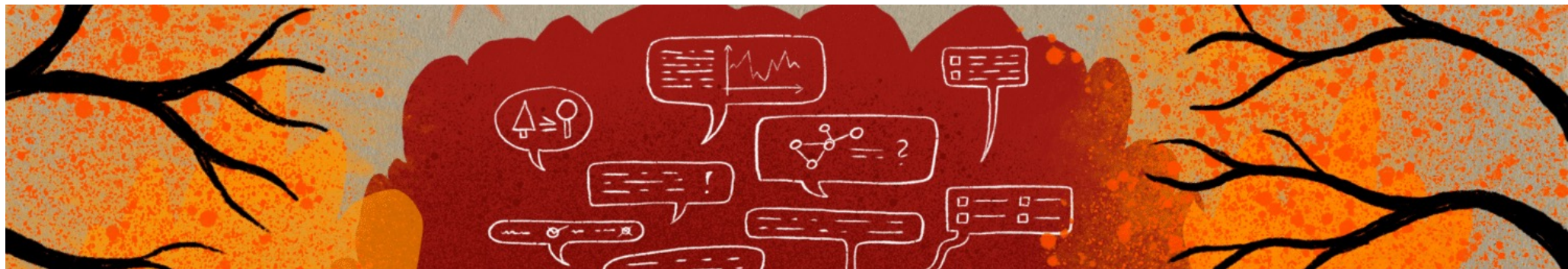


My Climate Risk

Evolution of MCR

Discussions are currently underway concerning potential *new hubs*

- ✓ Centre for Climate Research Singapore
- ✓ Central America/northern South America (Ana Quesada & Paola Arias)
- ✓ Senegal (Amadou Gaye)
- ✓ University of Belgrade, Serbia



WCRP linkages



My Climate Risk

The MCR way

We expect the collaborations between MCR and other parts of WCRP to mainly occur *at the hub level*, based on the particular interests of each hub.

CLIVAR

IITM and SAEON hubs and co-chair Regina Rodrigues are part of the CLIVAR region panels and Marine Heatwaves Research Focus

WCRP Academy

Co-hosting a bank of shared training resources on the Walker Academy portal by the Walker Institute hub

WCRP EPESC

ICPAC hub representative is participating in the EPESC Africa Working Group

Special issue of *Frontiers in Climate* from the OSC

Members of the MCR community have contributed to several papers

WCRP linkages



My Climate Risk

GEWEX

The Argentinian Hub and the future MCR hub for Central America and northern South America, if formalized, are involved with ANDEX

CORDEX

SSG member Douglas Maraun participated in the EURO-CORDEX Distillation Workshop. The MCR Regional Urban Hubs (University of Tsukuba and the Hong Kong University of Science and Technology) coordinate urban climate modelling with the CORDEX-Southeast Asia project, with potential participation of the ADMU hub.

RifS

Several MCR representatives participated in the RifS Workshop on Robustness of Climate Change Information for Decisions (April 22-24); they will explore potential involvement in the next steps.

Partnerships



My Climate Risk

The MCR way

We expect external partnerships to mainly occur at the hub level. For instance, WWRP linkages include representation from the ADMU regional hub in the Progressing EW4All Oriented to Partnerships and Local Engagement (PEOPLE) steering group. Interested external partners participate in an ex-officio capacity

Ex-officio Members

Copernicus Climate Change Services; World Weather Research Programme (WWRP); the Societal and Economics Research Application (SERA) Working Group of the WWRP; World Adaptation Science Programme

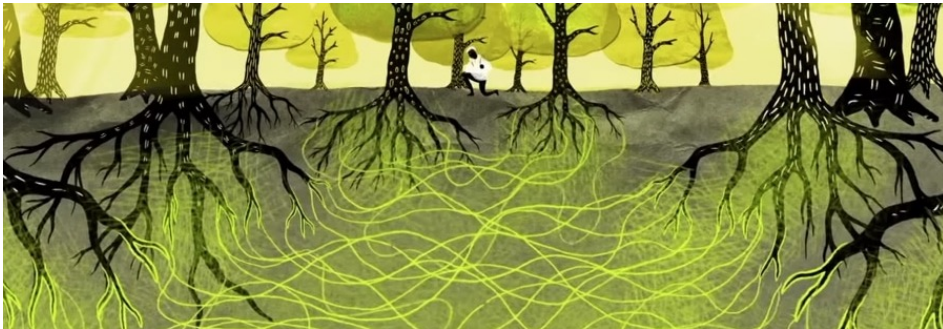
New Ex-officio

World Bank and Red Cross/Red Crescent Climate Centre

Issues & challenges

Community evolution

Our community and network are *evolving well* and as planned



Real challenge

- ✓ Developing meaningful interactions between the hubs
- ✓ Engaging SSG members in MCR activities beyond the General Assemblies
- ✓ The limited amount of administrative support that can be provided to MCR from the WCRP Secretariat



Thanks!

World Climate Research Programme

My Climate Risk

45th Session of the WCRP JSC
Lima, 27-30/05/2024

