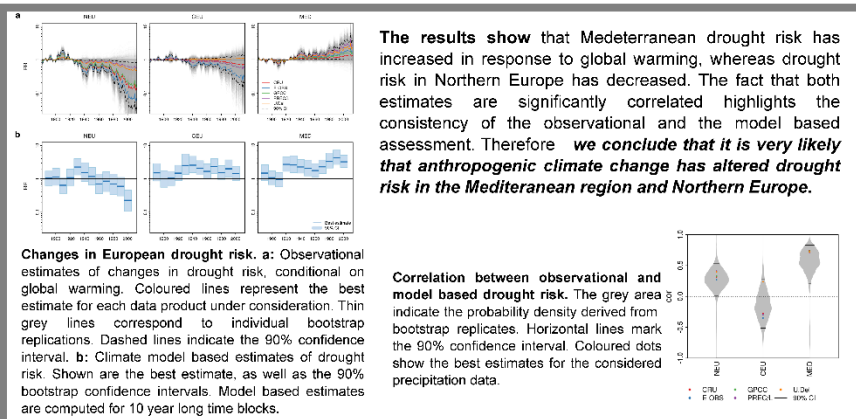
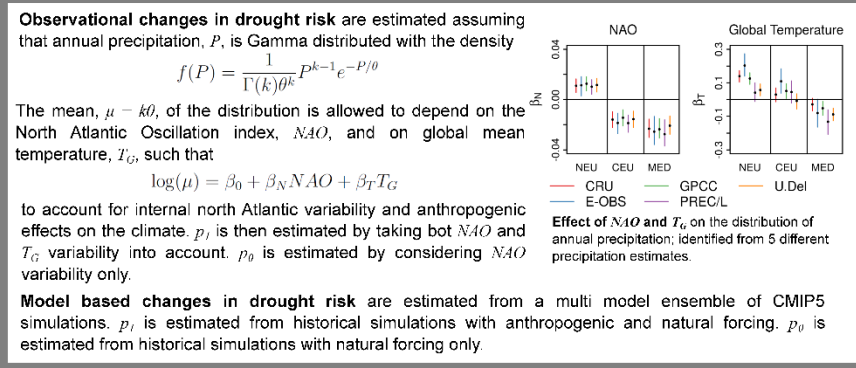
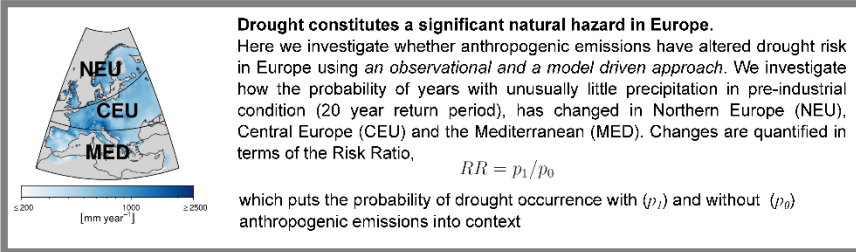




# Human influence on meteorological drought risk in Europe

L. Gudmundsson & S. I. Seneviratne



Drought:  
A significant natural hazard in Europe

Observational  
and  
model based assessment

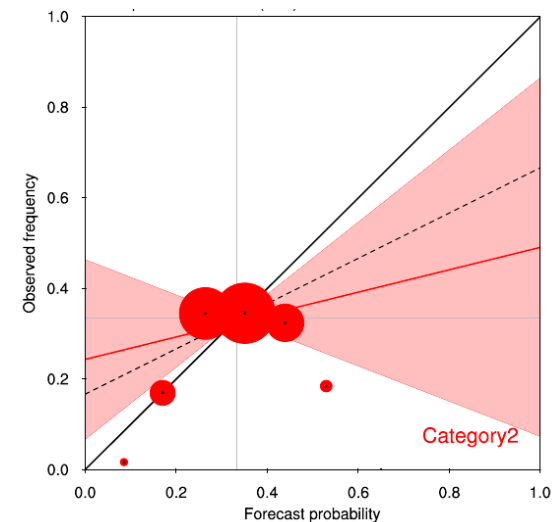
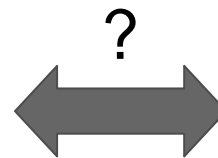
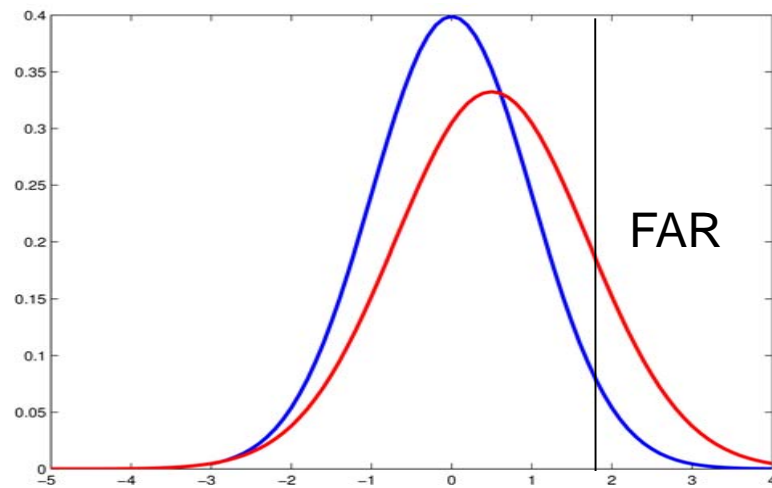
Human influence  
on drought risk  
is very likely

# Predictability of the NAO in seasonal hindcasts from 1900-2009

Nathalie Schaller, Antje Weisheimer and Tim Palmer

A) How well do seasonal forecast models predict winter NAO and extreme winter weather in Europe?

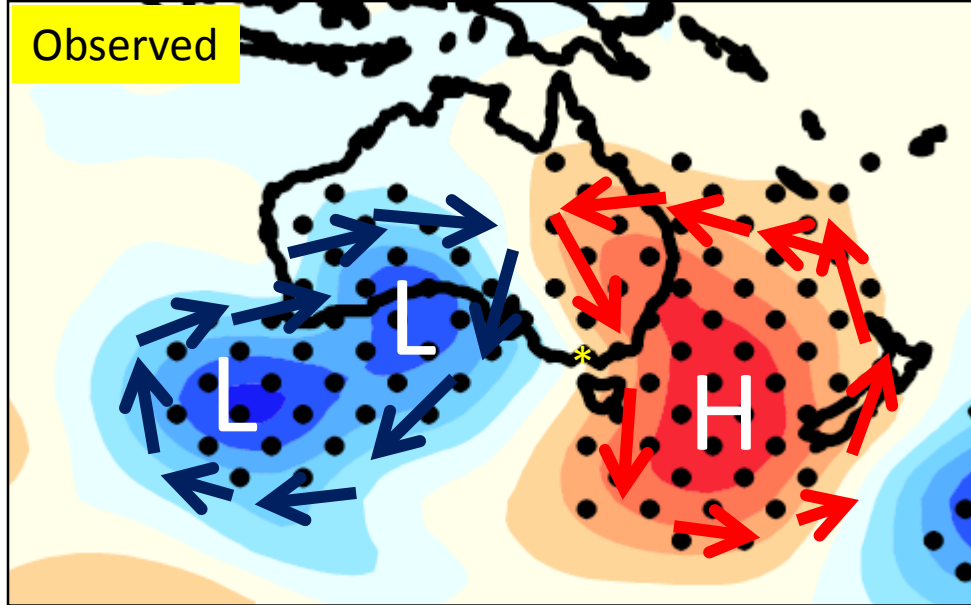
B) What does an event attribution statement mean if forecast is unreliable?



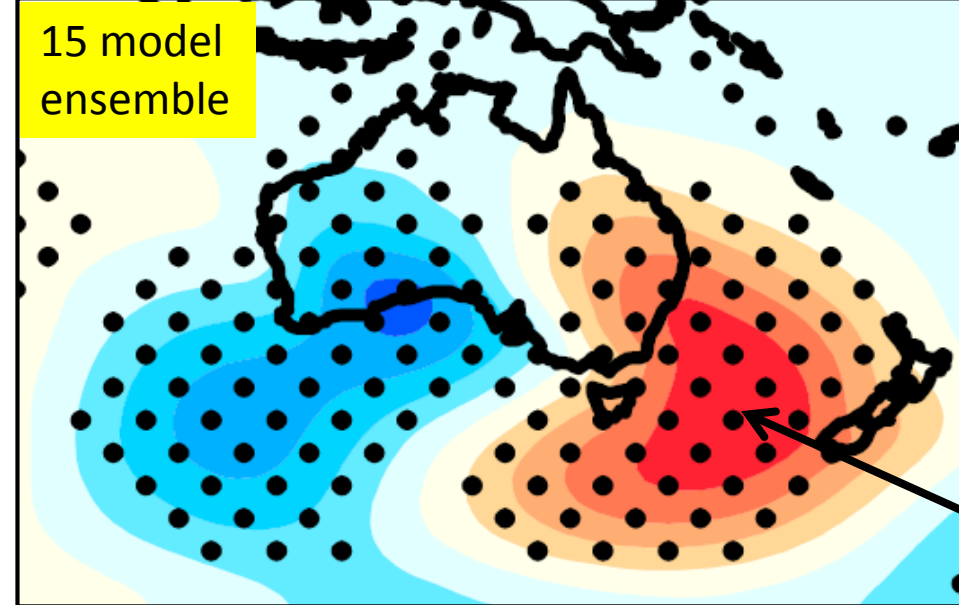
# Synoptic and oceanic conditions during heat wave events: A case study for southern Australia

Tim Cowan (University of Edinburgh/CSIRO)

Circulation (MSLP) anomalies averaged over all first heat wave days for southeast Australia



Observed

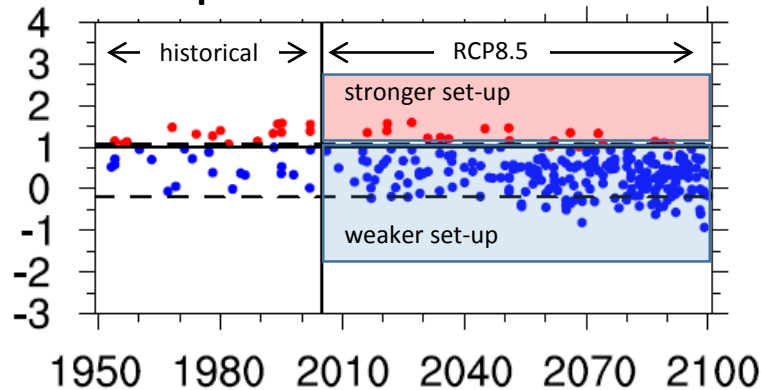


15 model ensemble

1) CMIP5 models accurately capture atmospheric circulation (pressure couplet) pattern associated with southern Australian heat waves

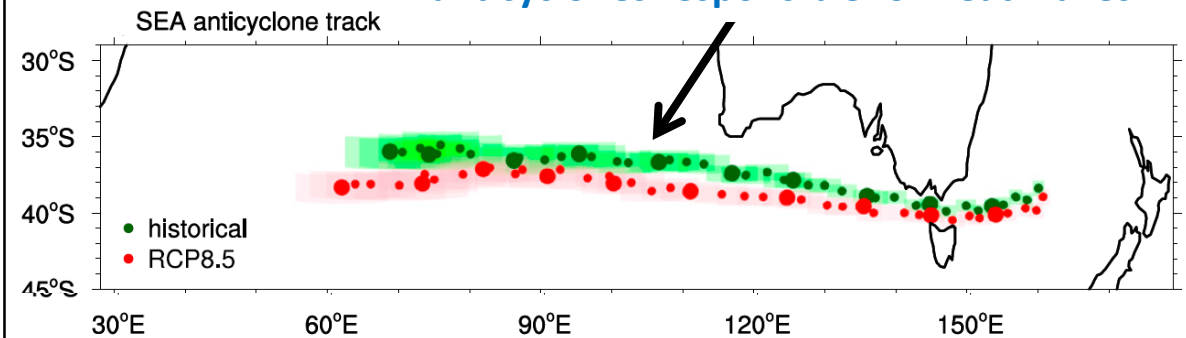
Anticyclone

Example CMIP5 model



2) Non-classical synoptic setup in the future will produce more heat waves given the increased temperatures across inland (e.g. desert) regions of Australia

3) Projected poleward shift in the anticyclones responsible for heat waves



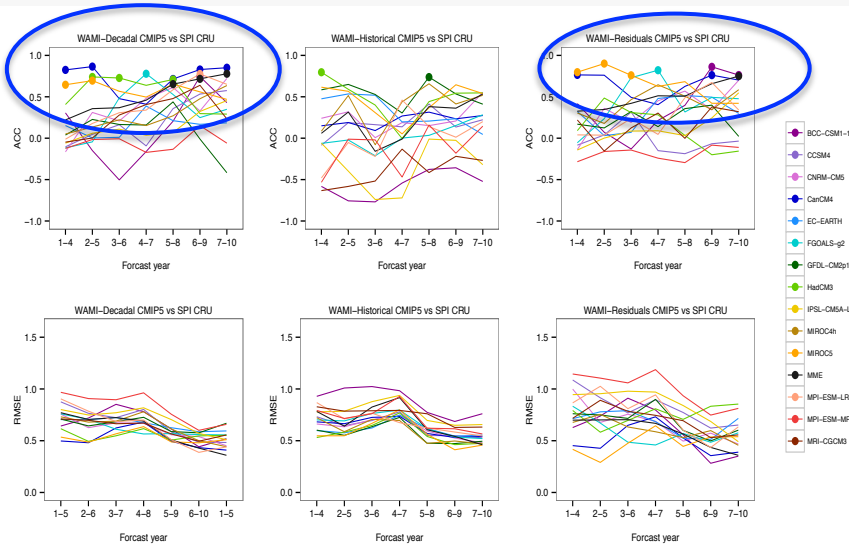
# Decadal prediction of Sahel rainfall using dynamics-based indices

## Objective



Assess the skill of CMIP5 decadal hindcast in predicting Sahelian summer rainfall(JAS) at decadal time scales using dynamics-based indices, and the role of the initialization.

ACC and RMSE metrics between the observed Standardized Precipitation Index (SPI: 10N20N-15W15E) and the simulated dynamic index WAMI



- Predictive skill model dependent
- Contribution of initialization: better ACC scores for initialized experiments (decadal hindcasts)

Noelia Otero, Elsa Mohino and Marco Gaetani

# Standardized drought indices: A novel uni- and multivariate approach

## Existing Indices



## Different types

- Meteorological drought
- Agricultural drought
- Hydrologic drought
- Ground water drought, ...

## Multivariate

- Precipitation
- Soil moisture
- Evapotranspiration
- Stream flow, ...

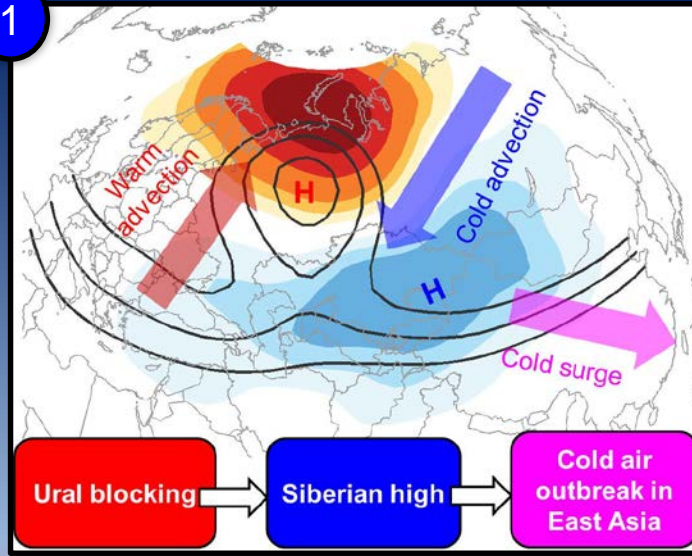
*dependent*

Flexible, general,  
multivariate,  
statistically  
sound approach

# Observed and Simulated Linkage between Ural Blocking and East Asian Winter Climate

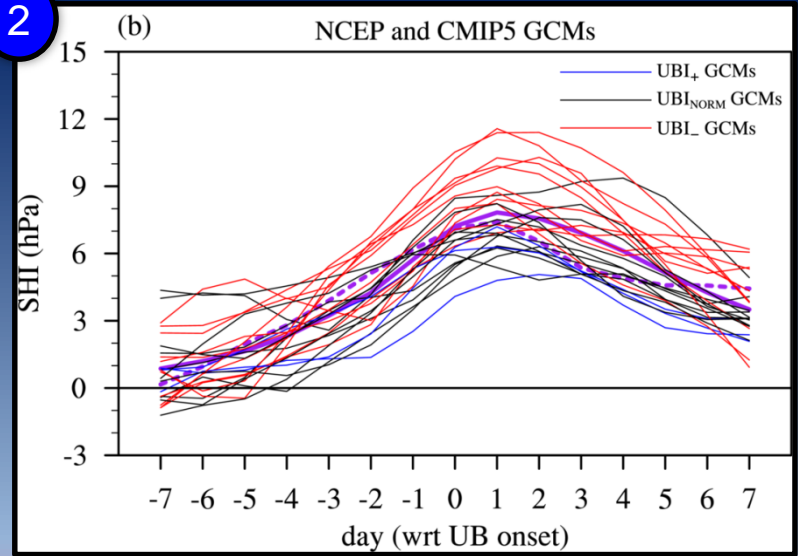
Hoffman H. N. CHEUNG ([hoffmancheung@gmail.com](mailto:hoffmancheung@gmail.com))

1



Current climate

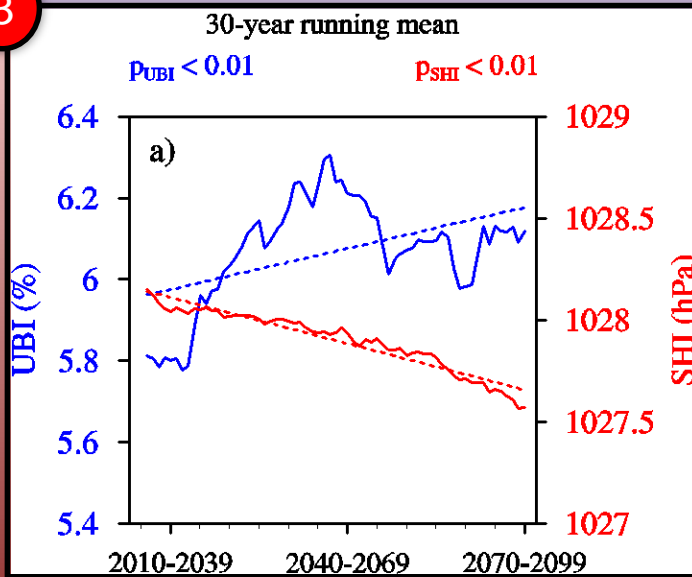
2



UBI = blocking frequency over 45°–90°E

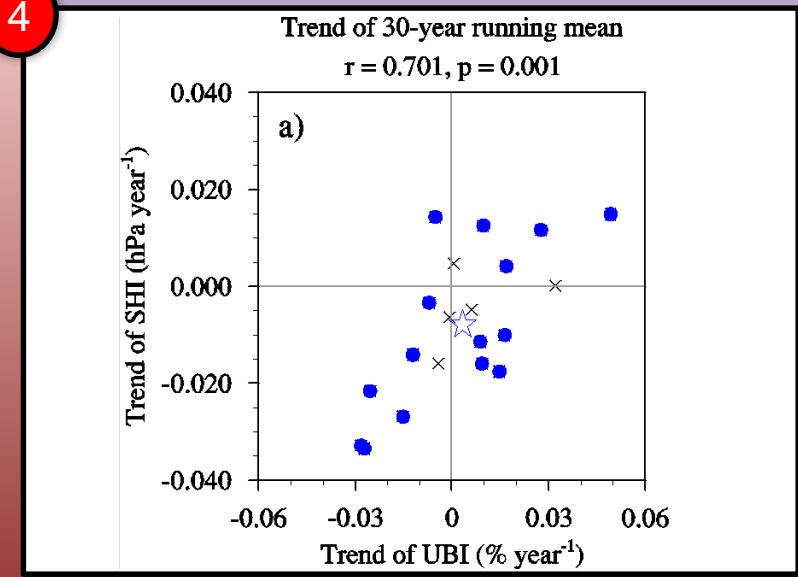
SHI = MSLP anomaly over 40°–65°N and 80°–120°E

3



Future climate (RCP8.5)

4





**Poster by**  
**Fumiaki Ogawa (University of Bergen)**

**Impacts of sea ice / SST changes  
for the observed climate change**

## Questions to address

- **Climatic trend**
  - Arctic Amplification ? e.g. Screen et al. (2013)
  - Weather extremes? e.g. Francis and Vavrus (2012)
- **Climate variability**
  - NAO-like correlation ? e.g. King et al. (2015)

## To be shown in the poster

- Ongoing coordinated AGCM experiments - contributed by 7 models
- Prescribing observed sea-ice/SST of the recent 33 years - OI-SST (1982-2014)
- Preliminary results are discussed. - CAM4, EC-EARTH